

Earth Observation for Sustainable Development



SPACE TECHNOLOGY CONFERENCE

CENTRAL EURASIA

10 – 11 May 2022, Hilton Tashkent City, Tashkent, Uzbekistan

POWERING SOCIOECONOMIC DEVELOPMENT



Let's take a stock at Climate Change

According to Intergovernmental Panel on Climate Change Sixth assessment report dated February 2022:

“The cumulative scientific evidence is unequivocal:

Climate change is a threat to human well-being and planetary health”

FACTS

- +1,1°C In 2021
- +1,5°C The COP21 Goal agreement
- +2,7°C where we go

IMPACTS

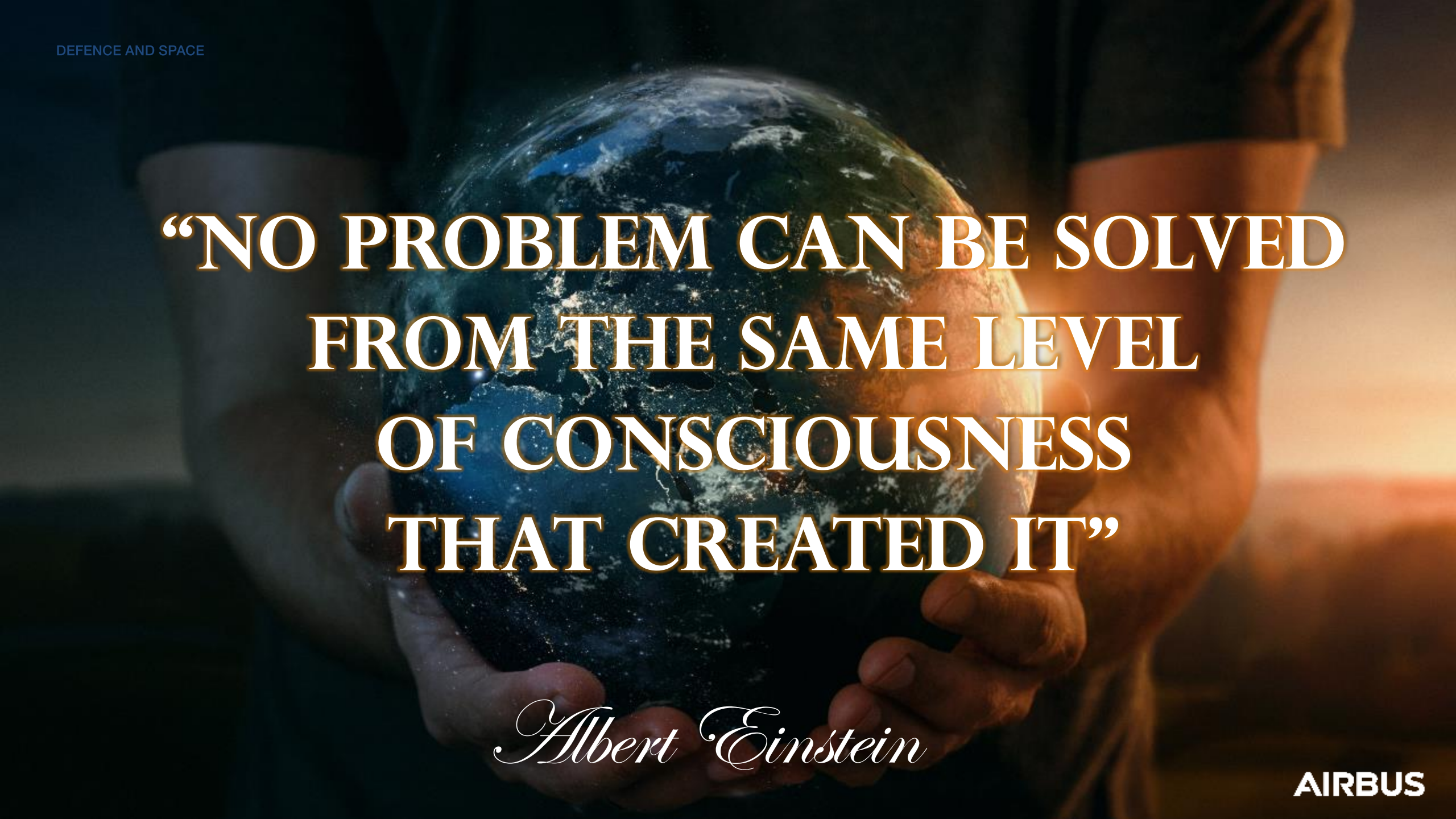
- ~ 3,5 Billions People very vulnerable to climate change
- +1 Billion People threatened by climate change by 2050

Adaptation to climate change won't happen without:

Restoring
Natural Ecosystems

Sustainable adaptation
and development of cities

More
social and Climate justice

A person's hands are shown holding a glowing, detailed globe of the Earth. The globe is the central focus, with blue oceans, green landmasses, and white clouds. The background is a warm, golden sunset or sunrise, with the sun low on the horizon, creating a soft glow. The person's hands are visible, with fingers gently cradling the globe. The overall mood is one of care and responsibility.

**“NO PROBLEM CAN BE SOLVED
FROM THE SAME LEVEL
OF CONSCIOUSNESS
THAT CREATED IT”**

Albert Einstein

Earth Observation is a game changer

Raising our level of consciousness

It brings objective data at a global scale with local precision at an unprecedented pace

It feeds automated analysis that drive decisions making and actions on the ground



Marine Environment



Forest Ecosystems



Land Based Services



Agriculture





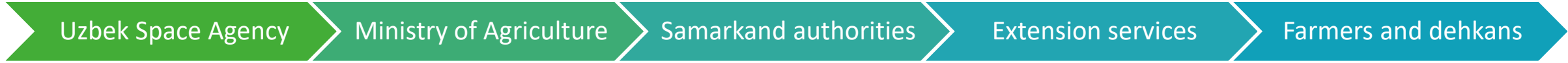
Foundation of a comprehensive geospatial digital ecosystem

for sustainable farming and
water management in Uzbekistan



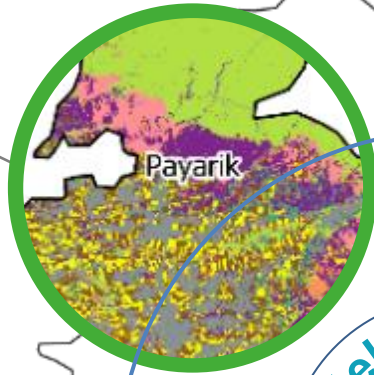
Geoferma Project

OVERVIEW



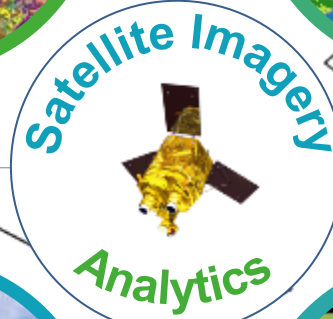
Geospatial Statistics

- Crop Mapping
- Crop Accreage estimate
- Crop Production estimate
- Global Water need estimate



Farm Evidence

- Field Database
- Crop analytics time series
- Anomaly reports



Consulting support

- Control of authorized land use
- Map of unused agricultural land
- Control of crop rotation



Advise to farmers

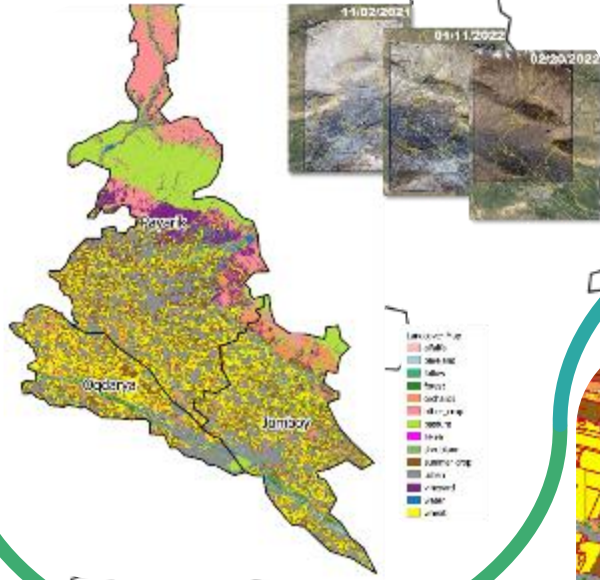
- crop water requirements at field level to prevent water stress



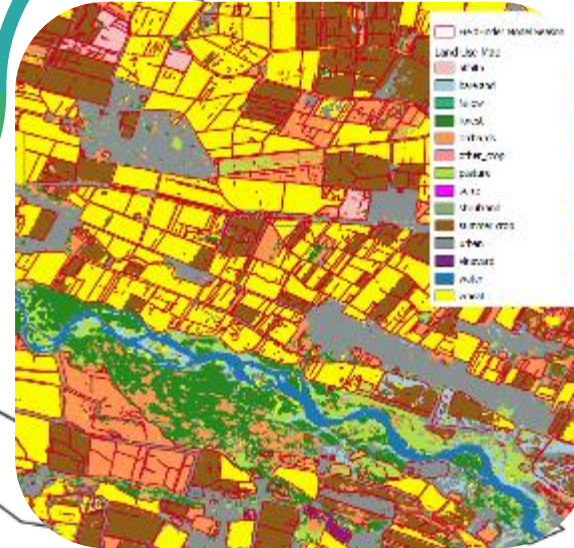
Geoferma Project

FIRST ACHIEVEMENTS

Landcover Mapping
based on SPOT images



Field delineation model adaptation
Field database creation

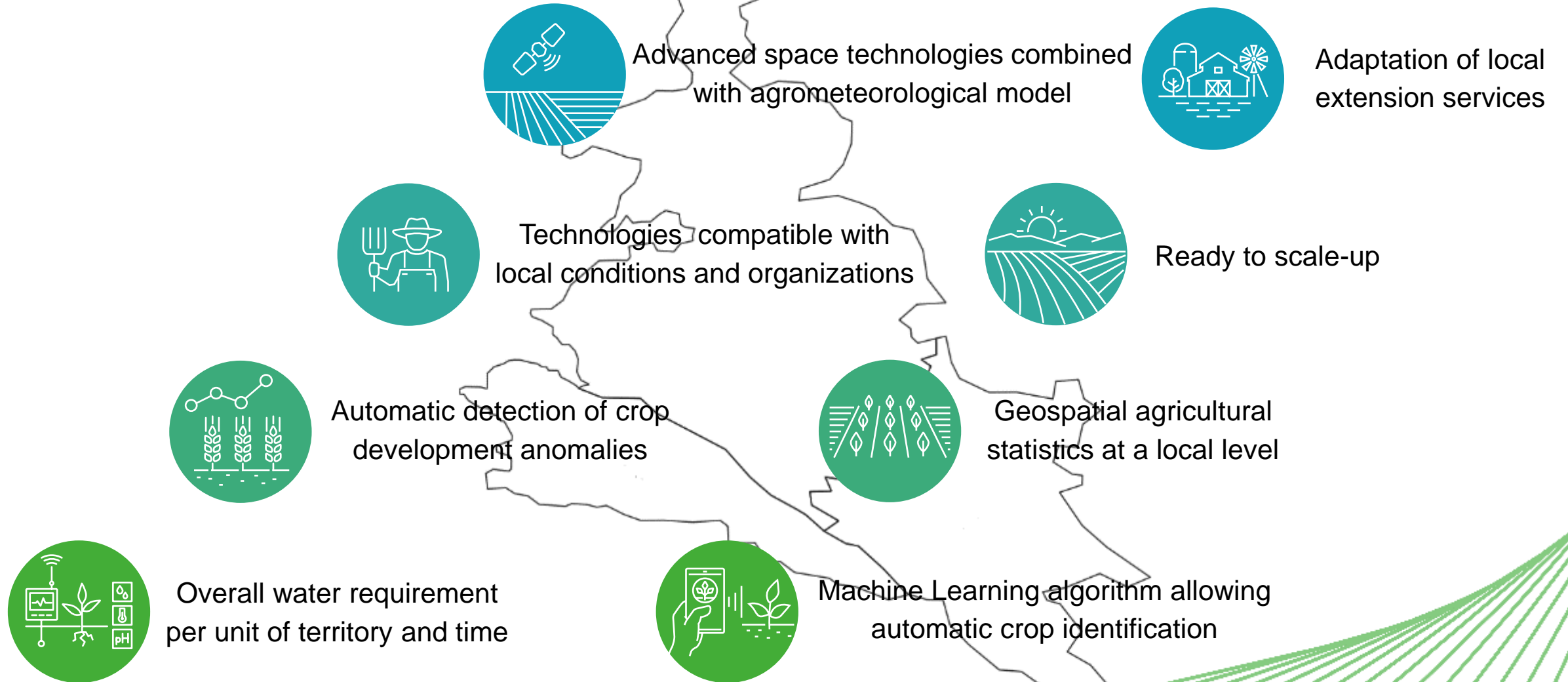


Land Use Map crossed
with Field Database

Crop acreage estimates

Geoferma Project

INNOVATION FOR SUSTAINABLE DEVELOPMENT



Geoferma Project supports SDGs

SOCIAL AND ENVIRONMENTAL IMPACTS FOR UZBEK AGRICULTURE



Thank you

VISIT US:

www.intelligence-airbusds.com

FOLLOW US:



#AirbusSpace

